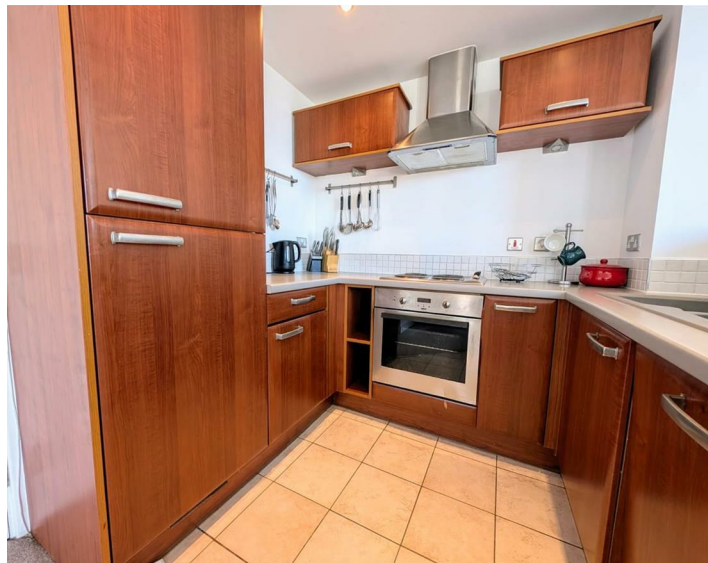




Apt 201 X Building, Liverpool, L3 9BA
£975 PCM

www.
cityresidential
.co.uk



About the Property

AVAILABLE NOW and located in the desirable Business District of Liverpool City Centre is this well presented two bedroom, second floor apartment available for let.

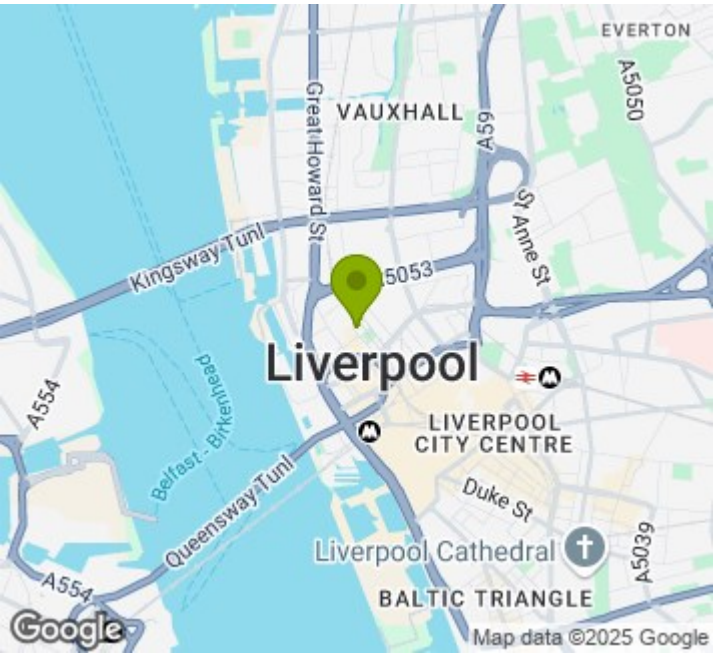
This light and bright corner apartment is situated in the ever popular X Building and provides easy access to many bars, restaurants and shops including the Liverpool One Shopping Centre.

The accommodation briefly comprises:- entrance hall, open plan living/dining room, fully fitted kitchen, master bedroom with en-suite shower room, second bedroom and a main bathroom.


X Building is serviced by a lift to all floors. A secure allocated parking space is included in the rental figure.

EPC - C. Council Tax Band - D. Deposit Amount - £1125.00
Call us now to arrange a viewing.

- Immediate Move In
- Two Bedroom, Two Bathroom
- Fully Furnished
- EPC - C
- Council Tax Band - D
- Deposit - £1125
- Parking Included



Energy Efficiency Rating

| | Current | Potential |
|---|---|-----------|
| Very energy efficient - lower running costs | | |
| (92 plus) A | | |
| (81-91) B | | |
| (69-80) C | | |
| (55-68) D | | |
| (39-54) E | | |
| (21-38) F | | |
| (1-20) G | | |
| Not energy efficient - higher running costs | | |
| | 71 | 80 |
| England & Wales | EU Directive 2002/91/EC  | |



City Residential
81/87 Victoria Street, The Old Haymarket, Liverpool L1 6DG
T: 0151 231 6100 F: 0151 231 6105
E: sales@cityresidential.co.uk



WWW.
cityresidential
.co.uk